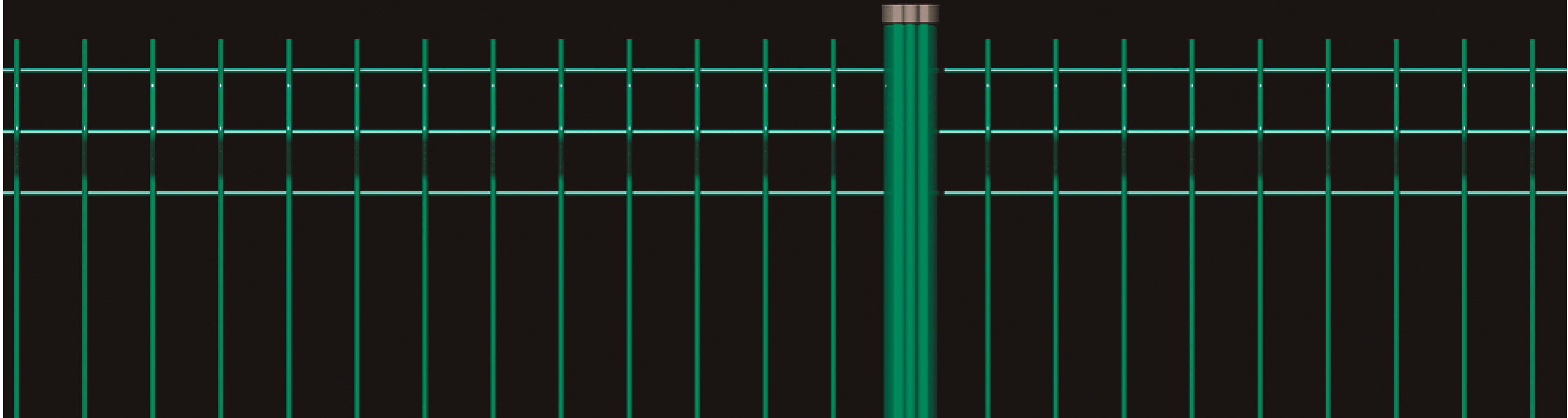


RITMO® CLIP SYSTEM



OUTSTANDING

- Rapid assembly
- Inflexibility and quality of the materials
- Paper clips with optional undetachable screws
- Time of exceptional life thanks to the covering anticorrosion
- Complete system

TECHNICAL FEATURES

POST

- Post type Ritmo Clip 1,2mm of thickness. Profile specially shaped to help the installation of the pannels. The panels mate to the post by means of supports type clip of easy installation.
- Special pliers for installation of the clips
- Steel carbon plate according to the EN-10327 standard
- Tensile strenght from 300 to 400 N/mm²
- Posts provided with polypropylene cap which is not degradable by the weather elements

PANEL

- Welded woven wire pannels with multiple knots to increase rigidity
- Dimensions of the panels: 200/55
- Wire diameter: 5mm
- Defensive spike finishing on top or bottom following pannel orientation

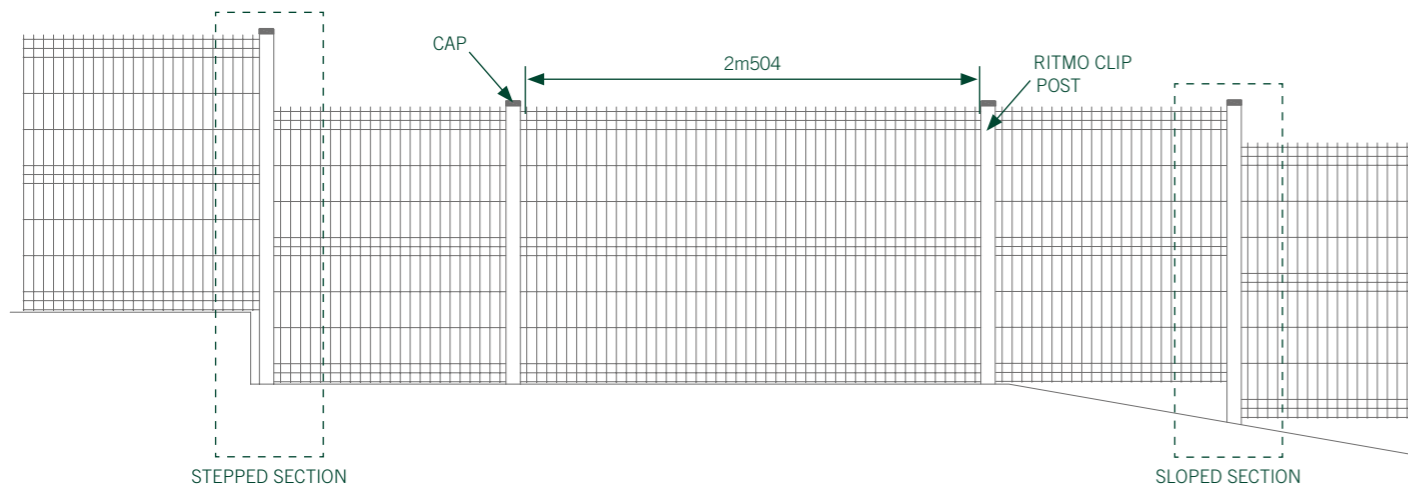
APPLICATION PLACES



FENCE HEIGHT	PANEL		POST		FOLDS	CLIPS x POST	DISTANCE BETWEEN POST AXIS
	LENGTH	HEIGHT	TYPE	TOTAL LENGTH			
0m60	2m495	0m63	RITMOCLIP 1,2mm	0m90	2	2+2	2m504
1m00		1m03	RITMOCLIP 1,2mm	1m50	2	2+2	
1m20		1m23	RITMOCLIP 1,2mm	1m70	2	2+2	
1m50		1m43	RITMOCLIP 1,2mm	2m00	2	2+2	
1m50		1m53	RITMOCLIP 1,2mm	2m00	3	3+3	
1m80		1m73	RITMOCLIP 1,2mm	2m30	3	3+3	
2m00		1m93	RITMOCLIP 1,2mm	2m50	3	3+3	
2m00		2m03	RITMOCLIP 1,2mm	2m50	4	4+4	
2m40		2m43	RITMOCLIP 1,2mm	2m90	4	4+4	

ASSEMBLY

STRAIGHT SECTION



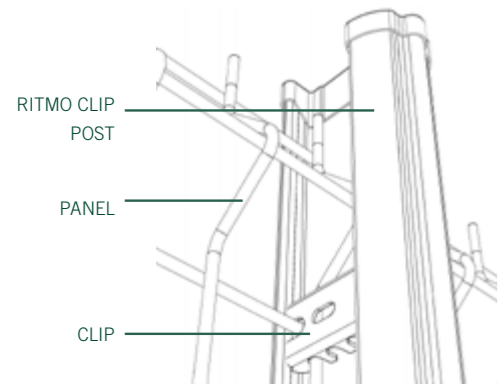
STEPPED SECTION

Install the longest post (normal length + step) on the lower part and attach both the upper and the lower panels to it by means of twice the number of brackets.

SLOPED SECTION

Install the longest post (normal length + slope) on the lower part and attach both the upper and the lower panels to it by means of twice the number of brackets.

SUPPORT CLIP



Clip of blockade without screw to assure the panels to the post. Screw of safety optional.

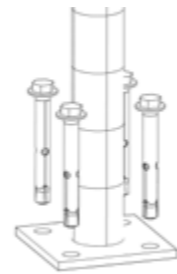
ANCHORING SYSTEM

BASE PLATE

Optional installation of a base plate, for installing the post on a concrete wal. Dimension of a plate 120x120x6mm.

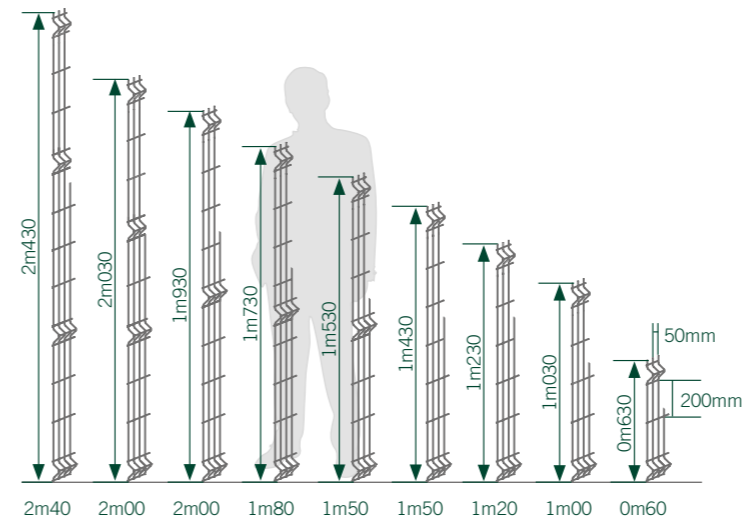
FOUNDATION

On the ground or wall surfaces, the foundations of the posts can be made using concrete.



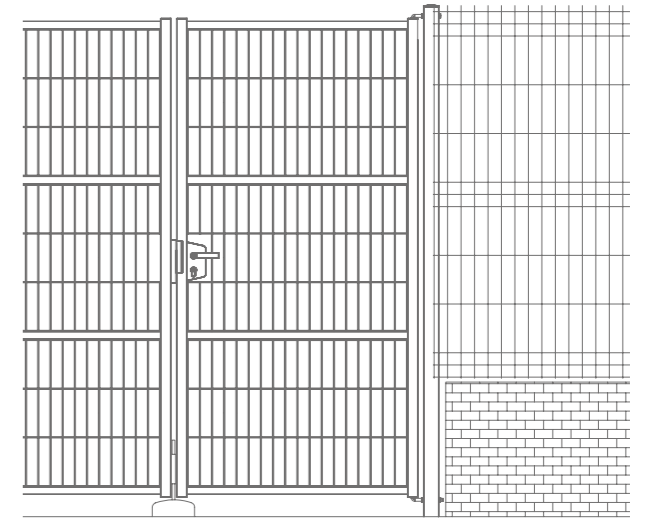
SIDE VIEW

RITMO CLIP POST



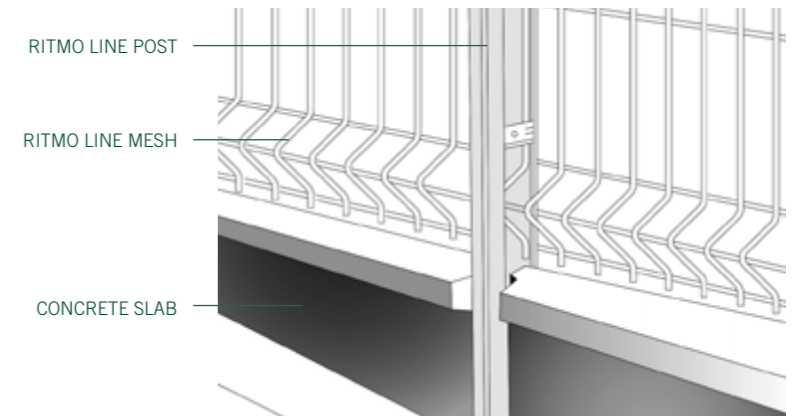
GATES

The Ritmo Clip system harmonises perfectly with the Light swing gate system and the Classic Sliding gates.



CONCRETE BASE WALL

It is possible to include a concrete slab 500mm high and 40mm thick between the line posts to act as a wall. No civil works needed.



ANTICORROSION COATING

All the materials of the Ritmo Clip system are hot dip galvanized and plastic coated with Rivisa Protecline anticorrosion coating system.

- Minimum thickness: 100 microns
- Option of applying the Rivisa Protecline Plus plastic coating, which prolongs the useful life of the materials by 30%
- Available in several colours from the Rivisa RAL chart. Colors:

- white RAL-9016
- green RAL-6005
- gray anthracite RAL 7016
- ⊕ for other colours, see the Rivisa RAL chart

