

SLIDING GATE

SLIDING GATE



OUTSTANDING

- Easy operation
- Complete system
- Exceptional service life due to their anticorrosion coating
- The sliding gates combine perfectly with all the fence models
- Gates approved to the CE standard

Technical features

- Leaves with built-in welded metal transoms (see table below). Wheels provided with ball bearings installed in the baseboard
- Rail to be embedded on the ground
- Gatestop post and guiding plate with adjustable Teflon rolls
- Gates can be assembled with bars, mail or metal sheet
- Lock ready plates are optional
- Mechanised gates are optional (see Access technical features sheet)
- Closure options:
 - A. Metal lock
 - B. Supports for padlock and handles

10
YEARS OF
GUARANTEE

Application places



Warehouses & factories

Power stations

Fairs & exhibitions

Hospitals

Institutes & schools

Housing and residential areas

Harbours

Airports

Train stations

Parks & gardens

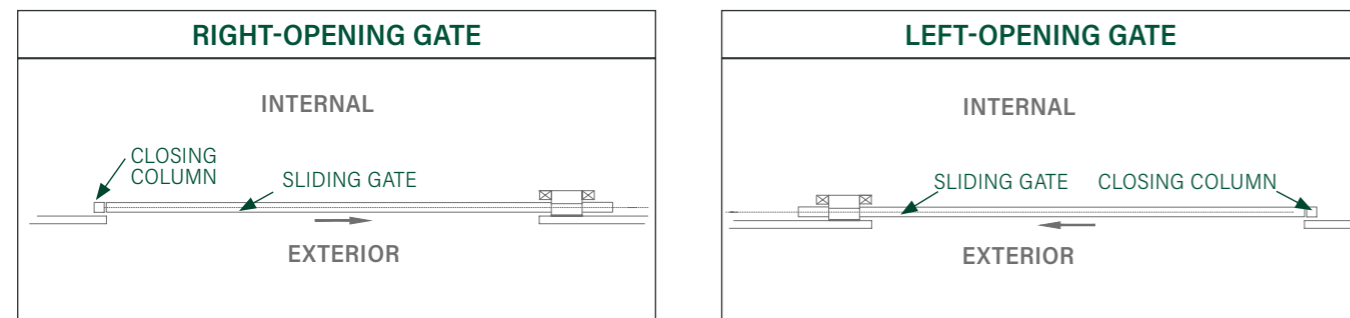
Technical features

DESCRIPTION	PASSAGE MAXIMUM	TOTAL LENGTH (queue included)	HEIGHT (ml)	BASE BOARD PROFILE (mm)	PANEL PROFILE (mm)	COLUMN OF CLOSING	BRIDGE GUIDE	CALITAX
4m door	4m to 4m 20	4m 60	2	250x100x3	80x80x2	120x120x3	120x120x3	Crossbeams 40x40mm Vertical bars 35x35mm
5m door	5m to 5m 20	5m 60						
6m door	6m to 6m 20	6m 88						
7m door	7m to 7m 20	7m 74						
8m door	8m to 8m 20	8m 63						
9m door	9m to 9m 20	9m 77						
10m door	10m to 10m 20	10m 77						
11m door	11m to 11m 20	11m 77						
12m door	12m to 12m 20	12m 77						
13m door	13m to 13m 20	13m 76						
14m door	14m to 14m 20	14m 61						

* Gates between 8m and 14m supplied in 2 assembled leaves.

DOOR OPENING DIRECTION

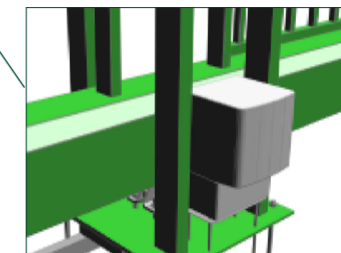
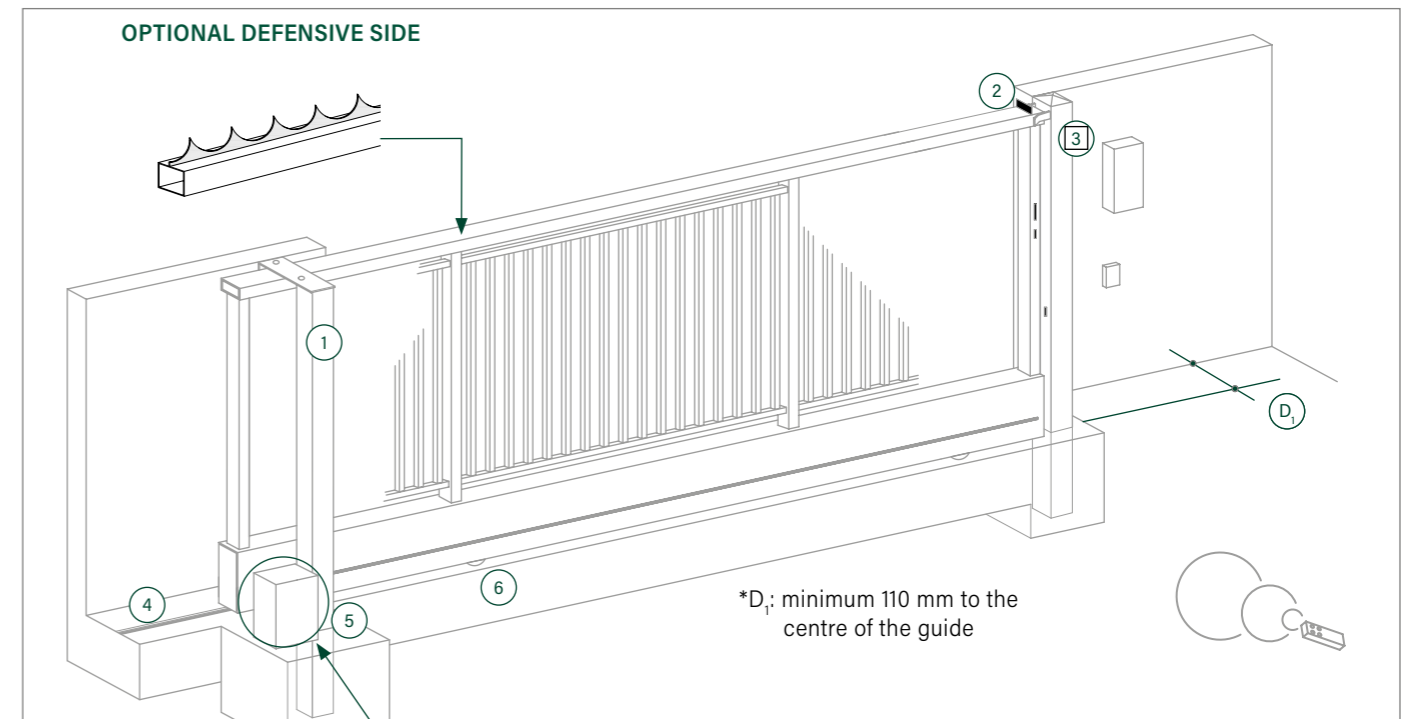
Unless otherwise stated, Rivisa sliding doors are supplied with right-hand opening.



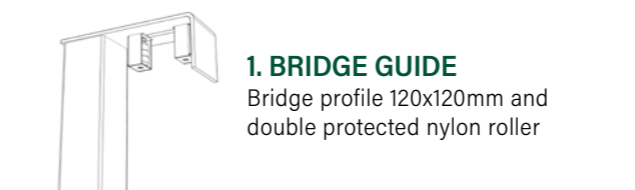
Markinge  of swing doors

Rivisa® complies with the standard: EN-13241-1:2003 which defines the safety and performance requirements for swing doors when installed in areas accessible to people. Rivisa® standard doors successfully passed the "TEST OF DECLARATION OF CONFORMITY" to obtain the certificate.

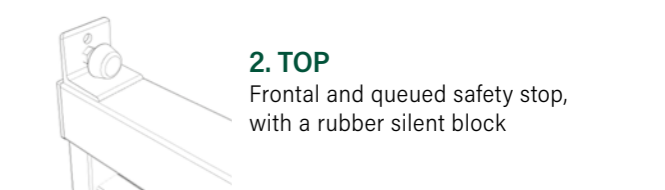
Technical details



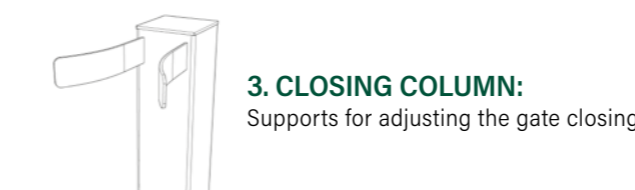
Optional motorisation with applications of industrial use and zones where control of entry points must be precise. The motorisation system consists of a motor and high-resistance motive gears.



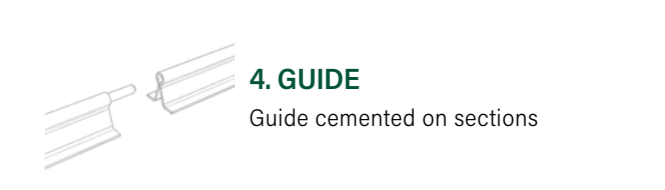
1. BRIDGE GUIDE
Bridge profile 120x120mm and double protected nylon roller



2. TOP
Frontal and queued safety stop, with a rubber silent block



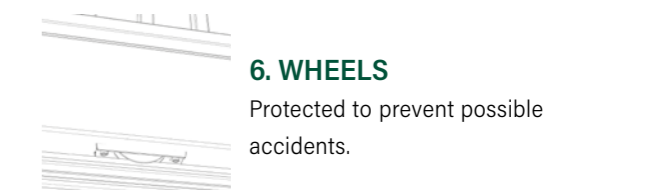
3. CLOSING COLUMN:
Supports for adjusting the gate closing



4. GUIDE
Guide cemented on sections

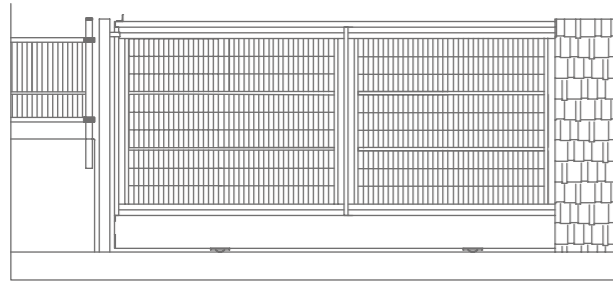


5. WHEELS
Protected to prevent accidents



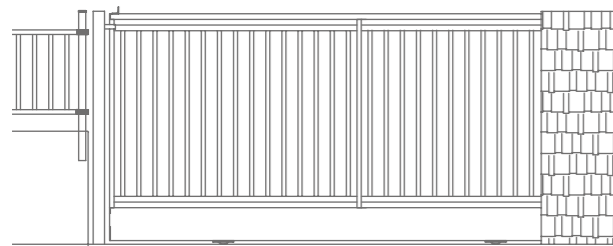
6. WHEELS
Protected to prevent possible accidents.

Models on request



CLASSIC®

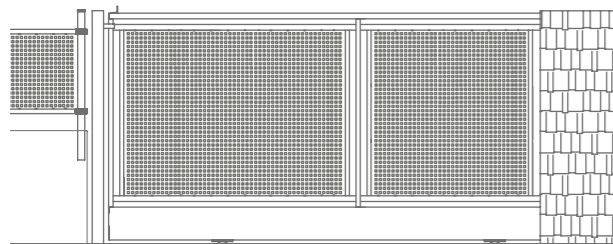
Leaf made of welded metal profiles (see table) and filled with Classic 40x40x1.5mm (horizontal), 30x30x1.5mm (vertical) and 300x55mm electro-welded mesh, with Ø5mm vertical wires and Ø6mm horizontal wires.



CALITAX®

Leaf made up of welded metal profiles (see table) and filled with Calitax fencing with 40x40x1.5mm (horizontal) and 35x35x1.5mm (vertical) profiles.

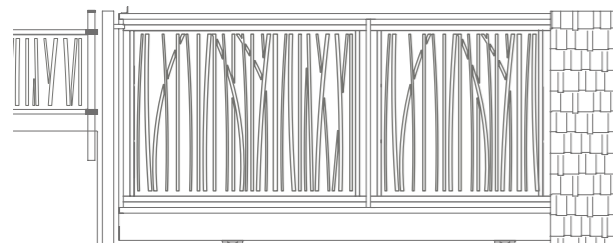
* Optional FINISHING: door filled with Defence-Plus mesh.



NOVÉ®

Leaf formed by welded metal profiles (see table) and filled with 40x40x1.5mm (horizontal), 30x30x1.5mm (vertical) Nové grille and perforated sheet with 30x30mm squares and a thickness of 1.5mm.

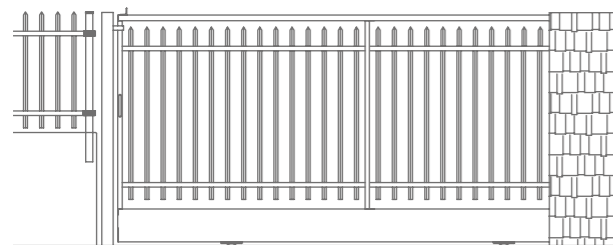
*this door model can only be manufactured up to a maximum length of 8m.



NOVÉ® NAT

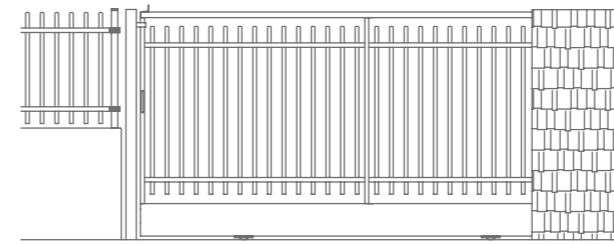
Door leaf made of welded metal profiles (see table) and filled with 40x40x1.5mm (horizontal), 30x30x1.5mm (vertical) Nové grille and NAT perforated sheet 1.5mm thick.

*This door model can only be manufactured up to a maximum length of 8m.



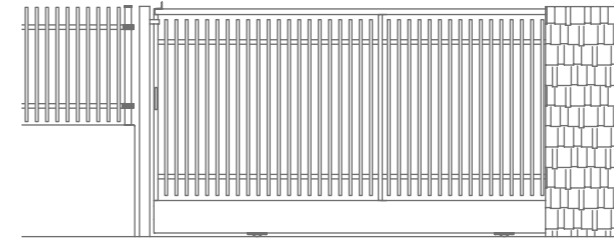
ULTRA®

Leaf formed by welded metal profiles (see table) and filled with Ultra grille with 40x40x1.5mm (horizontal) and 30x30x1.5mm (vertical) profiles.



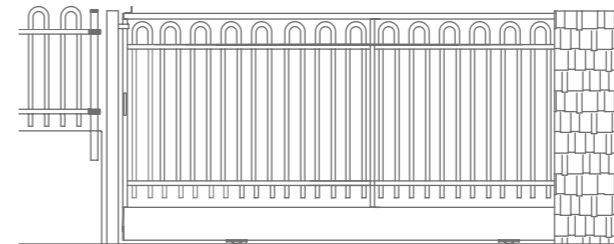
ULTRA® ROND

Leaf made of welded metal profiles (see table) and filled with Ultra Rond railing made of 40x40x1.5mm (horizontal) and Ø25x1.5mm (vertical) profiles.



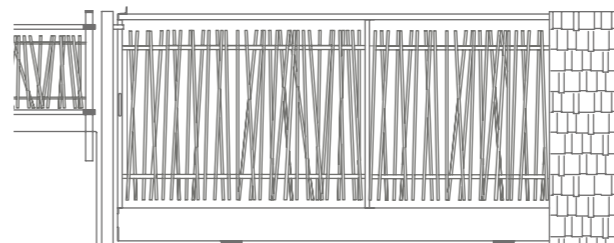
FLATER®

Leaf formed by welded metal profiles (see table) and filled with Flater railing made with 50x30x1.5mm (horizontal) and 50x10x1.5mm (vertical) profiles.



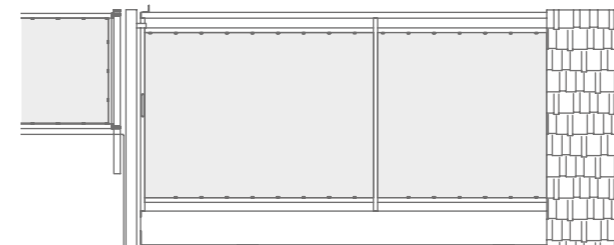
DECOR®

Leaf formed by welded metal profiles (see table) and filled with Decor railing made with 40x40x1.5mm (horizontal) and Ø20x1.5mm (vertical) profiles.



NATURE®

Leaf made of welded metal profiles (see table) and filled with Nature grating made of 40x40x1.5mm (horizontal) and Ø25x1.5mm (vertical) profiles.



SUPER®

Door leaf made of welded metal profiles (see table) with flat opaque sheet infill.

*This door model can only be manufactured up to a maximum length of 8m.

Accessories



1. SLIDING DOOR LOCK

Industrial type lock for sliding doors with powder coated aluminium case and stainless steel mechanism.



2. MECHANICAL CODE LOCK FOR A SLIDING DOOR

Mechanical code lock for sliding doors with powder coated aluminium case and stainless steel mechanism.



3. CYLINDER WITH TRIANGLE FOR FIRE BRIGADE

European 30 x 30 mm stainless steel cylinder with triangle for a fire brigade lock. The triangle acts on the bolt and the deadbolt. This system is adaptable to all locks.



4. 60 MM CYLINDER

Symmetrical European cylinder with 3 keys: 60 mm.



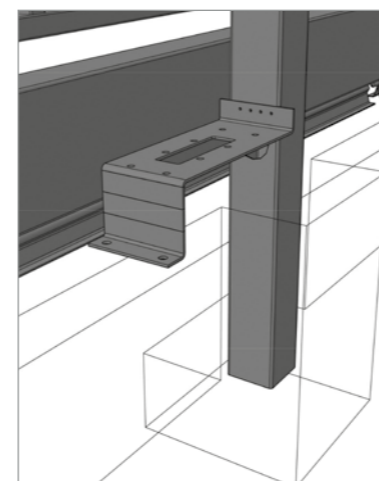
5. BLANK CYLINDER KEY

Blank key that allows copies to be made. For all cylinder sizes.

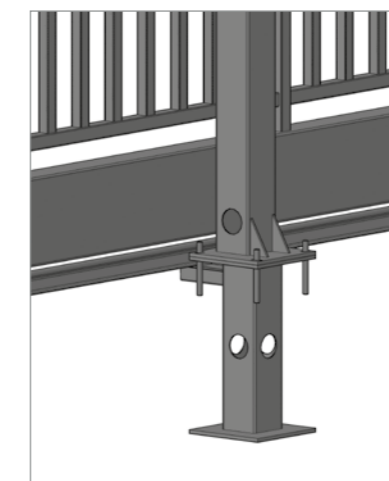


6. WELDED ON DEFENSIVE PROFILE

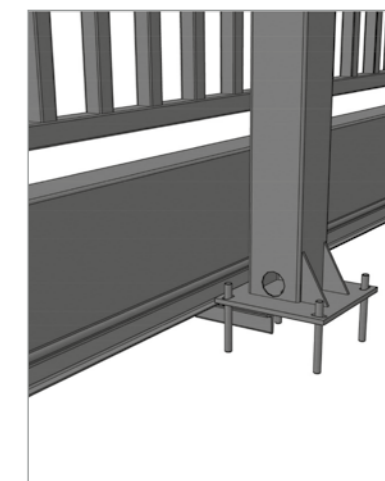
WIDTHRING SYSTEM



1. Foundation: anchoring system with all fastening elements of the gate concreted.



2. With double base plate system: anchorage via double-founded base plates system.



3. Base plate: anchor system motherboards and anchors.

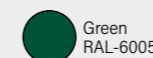
Anticorrosion coating

All the materials of the system are hot-dip galvanised and plastic-coated with the **Rivisa® Protecline** anticorrosion coating system.

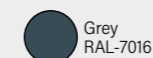
- Minimum thickness: 100 microns
- Option of applying the **Rivisa® Protecline Plus** plastic coating, which prolongs the useful life of the materials
- Option of applying the **Rivisa® Protecline Plus triple** plastic coating, which prolongs the useful life of the materials
- Available in several colours from the Rivisa RAL chart. Colours:



White
RAL-9016



Green
RAL-6005



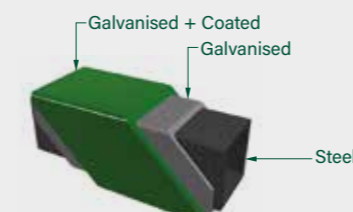
Grey
RAL-7016



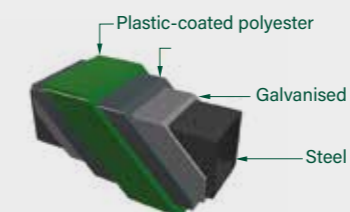
For other colours
see Rivisa RAL chart

* Nové and Nové Nat sliding doors cannot be plastic-coated in White RAL-9016.

protecline



protecline PLUS



protecline TRIPLE

